



SHAANXI SHINHOM ENTERPRISE CO.,LTD

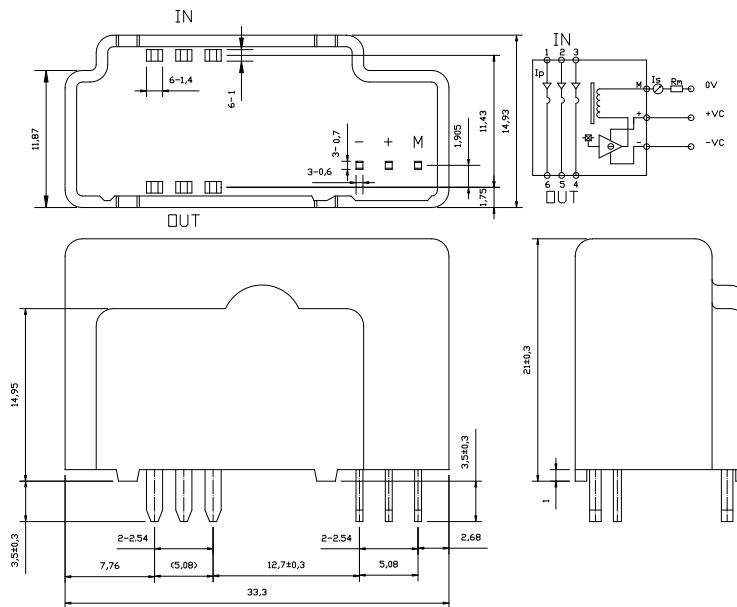
HBC-LAH Series Hall Effect Current Sensor

HBC-LAH Series current sensor with a galvanic isolation between primary and secondary circuit. It provides accurate electronic measurement of DC, AC or pulsed currents.

ELECTRICAL DATA(25°C)

	HBC50LAH	HBC100LAH	
Rated input current(IP)	50	100	A
Test current range	90	160	A
Load impedance(@rated current)	±12V	20~100	Ω
	±15V	22 ~163	Ω
Sec rated current	25±0.5%	50±0.5%	mA
Supply voltage	±12~±15±5%	±12~±15±5%	V
The supply consumes current statically 25°C	≤±12	≤±12	mA
Turns ratio	1:2000	1:2000	
Offset current Drift	≤±0.4	≤±0.3	mA
Current temperature drift -40°C~+85°C	≤±0.6	≤±0.5	mA
Response time	<1.0	<1.0	μs
Linearity	≤±0.2	≤±0.2	%FS
Insulation voltage 50(60)HZ,1min	2.5	2.5	KV
di/dt	>50	>50	A/μs
Bandwidth(-3dB)	DC...100	DC...100	KHz
Sec DCR@70°C	76	120	Ω
Operating Temperature	-40~+85	-40~+85	°C
Storage Temperature	-40~+105	-40~+105	°C

MUTING DIMENSIONS(FOR REFERENCE ONLY)



INSTRUCTIONS FOR USE

1. When the current will be measured goes through a sensor, the voltage will be measured at the output end. (Note: The false wiring may result in the damage of the sensor).
2. The output amplitude of the sensor can be adjusted according to users requirements.
3. Custom design in the nominal input current and the output voltage availabl