



TERMINAL BASE TYPE TOROIDAL INDUCTORS

ATC/TC SERIES

FEATURES:

- Toroidal-shape core reduces coil roar and magnetic flux leakage

TC Type:

- Compact and high performance
- Fixed terminal allows easy mounting on PC board and excellent vibration resistance

ATC Type:

- Effective for eliminating alternator noise within the 1KHz to 200KHz range

APPLICATIONS:

TC Type:

- For line filters at the inlet and outlet of switching power supplies
- For equipment using thyristors such as SCR and triac
 - Light adjustment
 - Heat adjustment
 - Speed adjustment
- Prevents malfunction

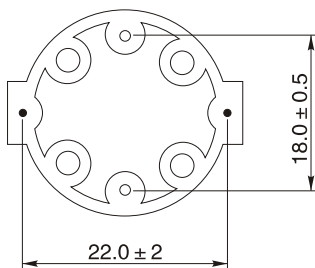
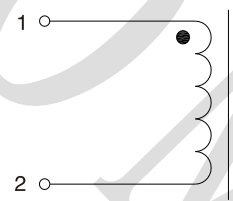
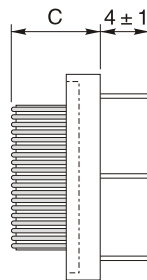
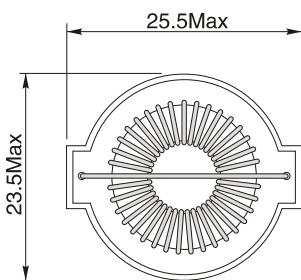
ATC Type:

- Elimination of alternator noise in car audio devices
- Smoothing of switching power supplies
- Normal mode choke(anti-EMI measurement)

ELECTRICAL CHARACTERISTICS:

Part Number	L(uH) 1.0KHz,0.1V	Rated current (A)Max	DCR (Ω)Max	Wire (mm φ)	C (mm)Max
TC10H-01	40 min.	3	0.045	0.8	17.0
TC10H-02	72 min.	3	0.055	0.8	17.0
TC10H-03	110 min.	3	0.068	0.8	17.0
ATC10H-01	300 min.	2	0.1	0.8	21.0
ATC10H-02	330 min.	1.5	0.1	0.8	21.0
ATC10H-03	350 min.	1	0.1	0.8	21.0
ATC10H-04	470 min.	0.5	0.1	0.8	21.0

PHYSICAL CHARACTERISTICS & WINDING



- TC Type: Iron power core
- ATC Type: Amorphous core
- Rated voltage: 50VDC max@40°C
- Inductance Testing: 100KHz 0.1V HP4284A
- RDC: QuadTech 1880 Milli ohmmeter
- Operating Temperature: -25°C to 105°C
- Storage Temperature: -25°C to 105°C

Note: All specifications subject to change without notice.